



MONTHLY MEMBERSHIP PROGRESS REPORT

District 24 C

Results as of: 02/28/2018

GMT: CINDY GREGG

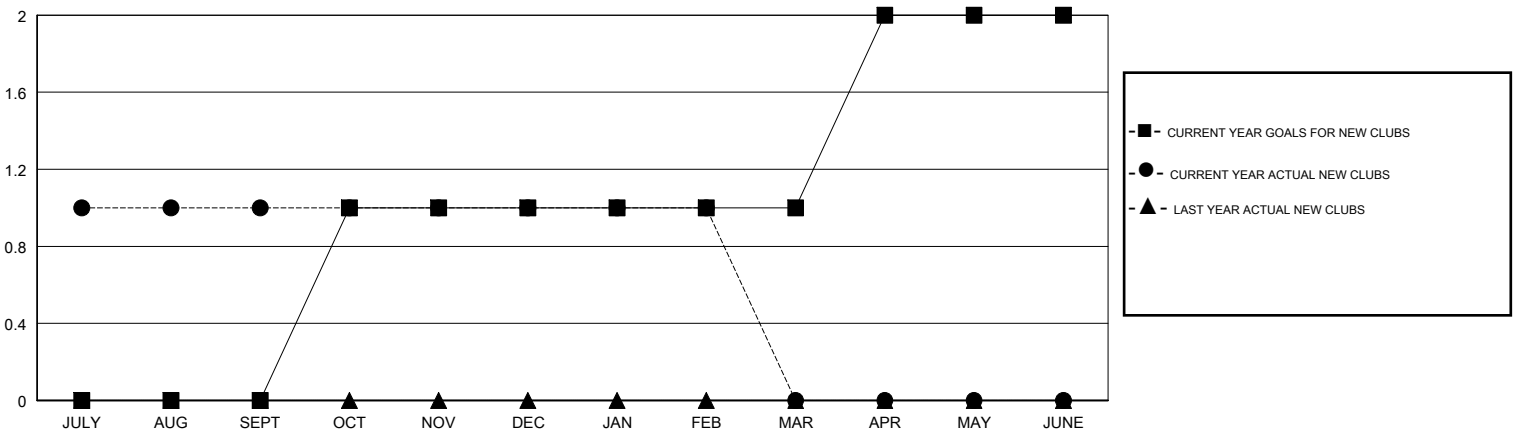
LOCATION VIRGINIA

GMT CA

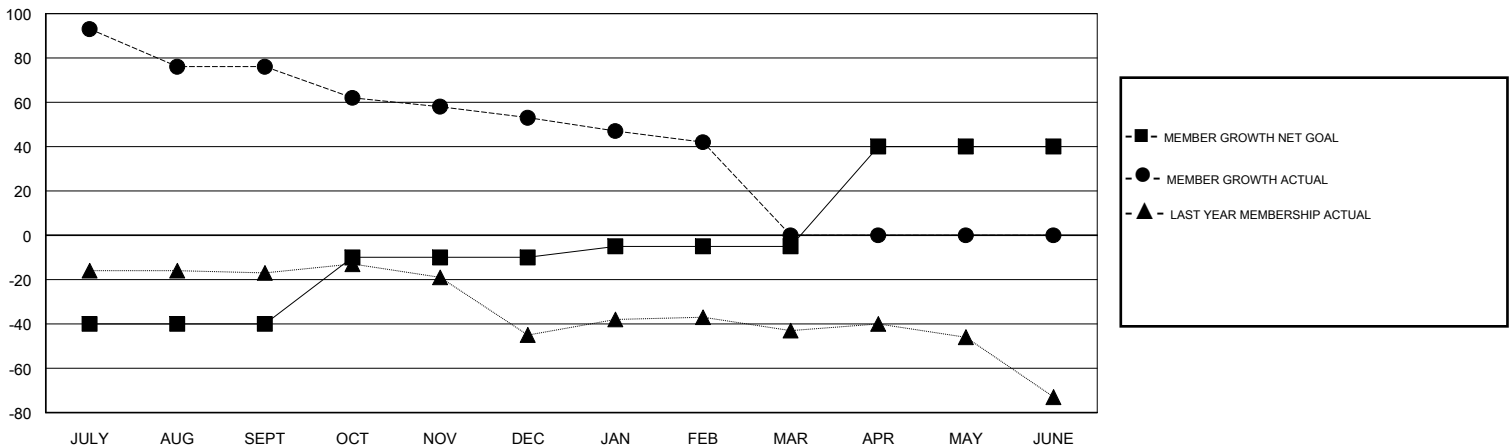
Clubs			
RESULTS FOR 2017-2018			
QUARTER	NEW CLUB GOAL	NEW CLUBS	DROPPED CLUBS
JULY/AUG/SEPT	0	1	1
OCT/NOV/DEC	1	0	1
JAN/FEB/MAR	0	0	0
APR/MAY/JUNE	1	0	0

Members			
RESULTS FOR 2017-2018			
QUARTER	MEMBER GROWTH NET GOAL	MEMBER GROWTH ACTUAL	DROPPED MEMBERS ACTUAL (including transfers)
JULY/AUG/SEPT	-40	155	67
OCT/NOV/DEC	30	12	33
JAN/FEB/MAR	5	13	24
APR/MAY/JUNE	45	0	0

GOALS AND ACTUAL NEW CLUBS CUMULATIVE



GOALS AND ACTUAL MEMBERS CUMULATIVE



DROPPED CLUBS: 2

14 CLUBS OF 47 ADDED 1 OR MORE NEW MEMBERS

GENDER DISTRIBUTION	
MALE	923 (70.08%)
FEMALE	394 (29.92%)
Women Percentage Fiscal Year Goal: 27%	

DROPPED MEMBERS	
DECEASED	11
CLUB CANCELLED	7
OTHER	106
TOTAL	124

[CLICK HERE FOR CUMULATIVE MEMBERSHIP DATA](#)

TOTAL FAMILY UNIT MEMBERS	196
FAMILY MEMBERS PAYING HALF DUES	98